



**UNNES**  
UNIVERSITAS NEGERI SEMARANG

# A COMPREHENSIVE APPROACH : REVEALS CONSERVATION EDUCATION IN COLLEGE

By : Wisudani Rahمانingtyas

# INTRODUCTION

- Rector's Regulation No. 22 of 2009 explain UNNES has 7 conservation pillars are biodiversity, green architecture and internal campus transportation governance, waste management, clean energy, paperless policy, art and cultural conservation, and conservation cadre handling
- Rector Regulation No. 6 of 2017 on Conservation Spirit of Universitas Negeri Semarang consisting of inspirational, caring, innovative, creative, sportive, honesty, and fairness values.



# BACKGROUND

- preliminary observation results show students do not apply conservation values in the campus environment
- the results of interviews to five students, 80% do not understand the three pillars of conservation
- The result of research that do by Subagya (2016) to show that of 96 students who planted trees, only 10% who do monitoring

## Cont.

- Based on research Tommi Yuniawan, et al, (2014) with entitle "Study of Ecolinguistic Attitudes of Students to the Expression of Environmental Conservation at State University

<b>Pilar Konservasi</b>	<b>FIP</b>	<b>FBS</b>	<b>FIS</b>	<b>FMIPA</b>	<b>FT</b>	<b>FIK</b>	<b>FE</b>	<b>FH</b>
Konservasi Biodiversitas	63.70	63.20	69.40	66.00	64.30	63.10	59.60	73.70
Arsitektur hijau dan sistem transportasi internal	64.40	62.80	68.67	65.33	61.93	63.13	47.27	75.07
Pengelolaan Limbah	62.93	64.13	67.60	64.00	60.53	60.53	45.20	70.13
Kebijakan Nirkertas	64.27	62.27	68.80	62.00	60.13	60.00	53.07	74.67
Energi Bersih	66.40	64.13	71.47	65.33	64.67	64.53	48.93	74.80
Konservasi Etika, Seni, dan Budaya	66.00	66.13	70.40	62.00	63.73	61.87	63.47	72.27
Kaderisasi Konservasi	67.60	64.70	73.70	65.50	63.70	62.20	57,90	72.50
Rata-Rata	65.04	63.91	70.01	64.31	62.71	62.19	53.63	73.31



## Literature review

- Puji Hardati, et al., (2016) explains that there are many ways to develop conservation cadres. Development of conservation cadres are as follows: students planting; training of conservation cadres; students plant in community service program; cultivate togetherness in conservation; college conservation education.

The top of the slide features a decorative image of a green landscape. In the center, there is a tree with vibrant purple flowers. Above the trees, a faint rainbow is visible against a light blue sky. The bottom of this image transitions into a solid green background that covers the rest of the slide.

# Research Question

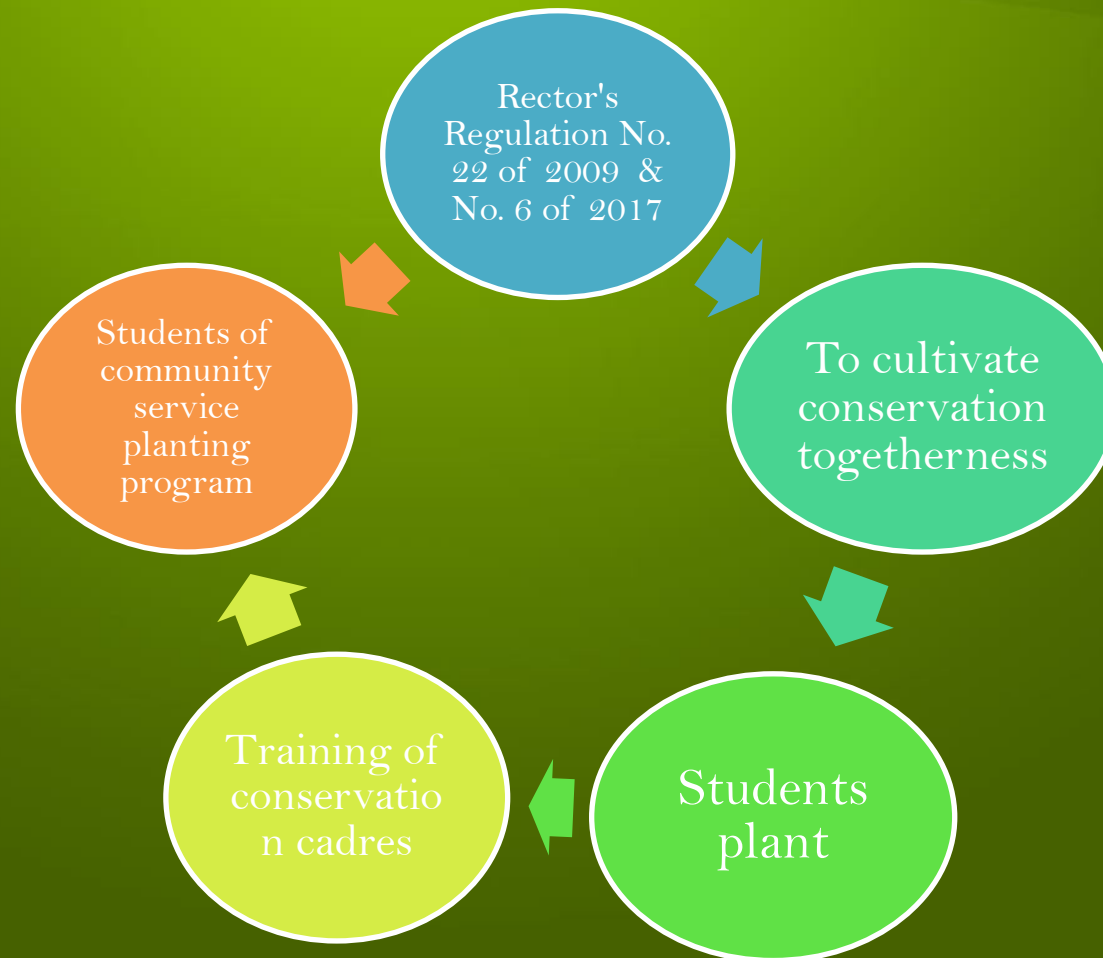
How is conservation cadre being implemented?



# Research Methodology

- Desk review : Reviewing the work programs and reports also allowed us to select interview subjects among students.
- Key informant interviews were conducted at chairman of conservation center, vice dean of student affairs
- Semi-structured interviews : a total of 35 students were randomly selected and interviewed
- Analysis : interactive analysis (Miles and Huberman)
- Validity : triangulation of sources and methodologies

# Results And Discussions





# Key finding dan Recommendation

Lack of understanding  
Rector's Regulation  
No. 22 of 2009 & No.  
6 of 2017 :  
socialisation

conservation cadre  
training is only  
facilitated at the  
university: autonomy  
of the faculty

Many students did not  
return to the planting  
site: policy

less civilize  
conservation  
togetherness: symbol  
reinforcement

# References

- Gunawan, T. (2003). Lingkungan Hidup dan Pembangunan Berwawasan Lingkungan.
- Handoyo, E., Si, M., Tijan, M. S., Cipta, H., Isi, R. G., Cover, D., ... & Basuki, A. M. (2012). MODEL PENDIDIKAN KARAKTER BERBASIS KONSERVASI: PENGALAMAN UNIVERSITAS NEGERI SEMARANG.
- Hardati, P. dkk.(2016). Pendidikan Konservasi. Semarang : UNNES PRESS.
- Irwanto. 2006. <http://www.indonesiaforest.net/silvika.html>. diakses tanggal 6 April 2017.
- Kisworo, B., & Muarifuddin, M. (2015). ANALISIS IMPLEMENTASI 7 PILAR KONSERVASI UNIVERSITAS NEGERI SEMARANG DI FAKULTAS ILMU PENDIDIKAN. *Journal of Nonformal Education*, 1(1).
- Masrukhi. (2012). Membangun Karakter Mahasiswa Berbasis Nilai Konservasi. *Artikel*. Simposium Pendidikan dan Kemahasiswaan di Universitas Sebelas April. 23 Juni 2012.
- Peraturan Rektor Universitas Negeri Semarang Nomor 22 Tahun 2009 tentang Universitas Negeri Semarang sebagai Universitas Konservasi.
- Peraturan Rektor Universitas Negeri Semarang Nomor 6 Tahun 2017 tentang Spirit Konservasi Universitas Negeri Semarang.
- Pratama, Hieronymus Yuwan. (2011). Menemukan Bentuk dan Proses Kaderisasi Pemimpin Dalam Kegiatan Rohani Kampus. Skripsi. Program Studi Ilmu Pendidikan Teologi, Fakultas Keguruan dan Ilmu Pendidikan, Universitas Katolik Indonesia Atma Jaya.
- Subagyo, S., & Ahmad, T. A. (2014). EVALUASI IMPLEMENTASI PROGRAM PENANAMAN DI KECAMATAN GUNUNGPATI OLEH MAHASISWA FAKULTAS ILMU SOSIAL. *Indonesian Journal of Conservation*, 3(1).
- Subagyo, S., dkk. (2016). Evaluasi Kaderisasi Konservasi di Fakultas Ilmu Sosial Universitas Negeri Semarang.
- Syamsuddin, A. R., & Damianti, V. S. (2006). *Metode penelitian pendidikan bahasa*. Diterbitkan atas kerjasama Program Pascasarjana Universitas Pendidikan Indonesia dengan Remaja Rosdakarya.
- Yuniawan, T., Masrukhi, M., & Alamsyah, A. (2014). SIKAP MAHASISWA TERHADAP UNGKAPAN PELESTARIAN LINGKUNGAN DI KAMPUS KONSERVASI: KAJIAN EKOLINGUISTIK DI UNIVERSITAS NEGERI SEMARANG. *Jurnal Penelitian Pendidikan*, 31(1).